

Triaxial Accelerometers for Improved Seismic and Geodetic Measurements



Paroscientific, Inc.
4500 148th Ave. N.E.
Redmond, WA 98052, USA
Tel: (425) 883-8700 Fax: (425) 867-5407
www.paroscientific.com
support@paroscientific.com

"The standard by which other standards are measured"

Triaxial Accelerometers for Improved Seismic and Geodetic Measurements

Abstract:

Triaxial Accelerometers have been developed with a full-scale range of several G's, parts-per-billion sensitivity and good long-term stability. The high range eliminates clipping (saturation) and sensitive measurements of tilt can be made without a leveling system. An internal alignment matrix uses the invariance of the Earth's gravity vector as a reference to measure seismic events and resultant earth movements. Improved, high-resolution measurements of earthquakes, tilts, slow-slip and long-term events are possible for phenomena occurring over a time spectrum from fractions of a second to years.

Background:

Traditional broadband seismometers and tiltmeters do not have the range to measure strong seismic events and traditional strong motion sensors do not have the sensitivity or stability to make good long-term geodetic measurements. Quartz Crystal Triaxial Accelerometers, with parts-per-billion resolution, can measure strong earthquakes without clipping and can use the invariance of Earth's 1 G gravity vector as a reference for long-term measurements.

Construction, Operation and Performance of Nano-Resolution Accelerometers:

Quartz crystal resonators (Figure 1) convert analog force inputs to digital outputs with parts-per-billion resolution:

http://www.paroscientific.com/pdf/G8086_Noise_Floor_of_Quartz_Crystal_Sensors.pdf.

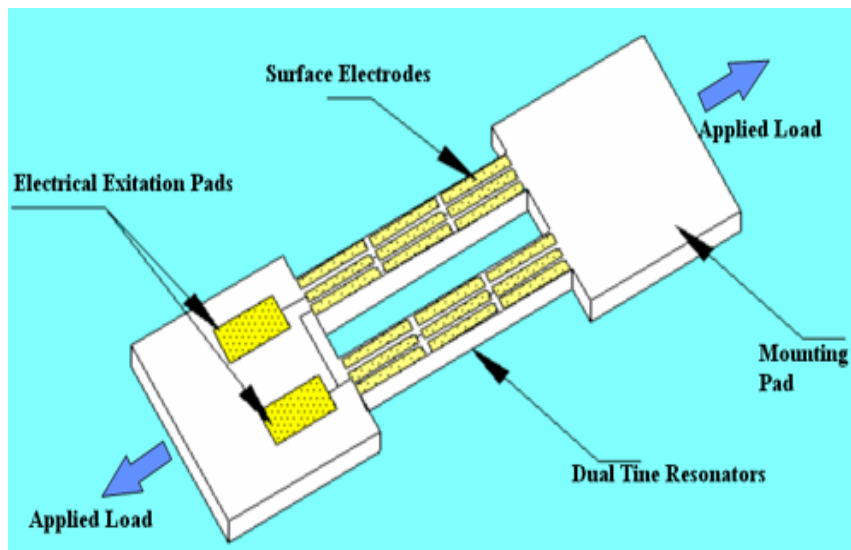


Figure 1

The seismic sensors employ suspended masses as the acceleration-to-force generators (References 1-3). Advanced electronics and frequency counting algorithms enable these inherently-digital sensors to make measurements at about -180dB relative to full scale range.

Figure 2 shows the experimental power spectral density of an isolated quartz resonator. The 5-stage, low-pass (anti-aliasing) IIR (Infinite Impulse Response) filters attenuate at 100 dB/decade above the selected corner frequency.

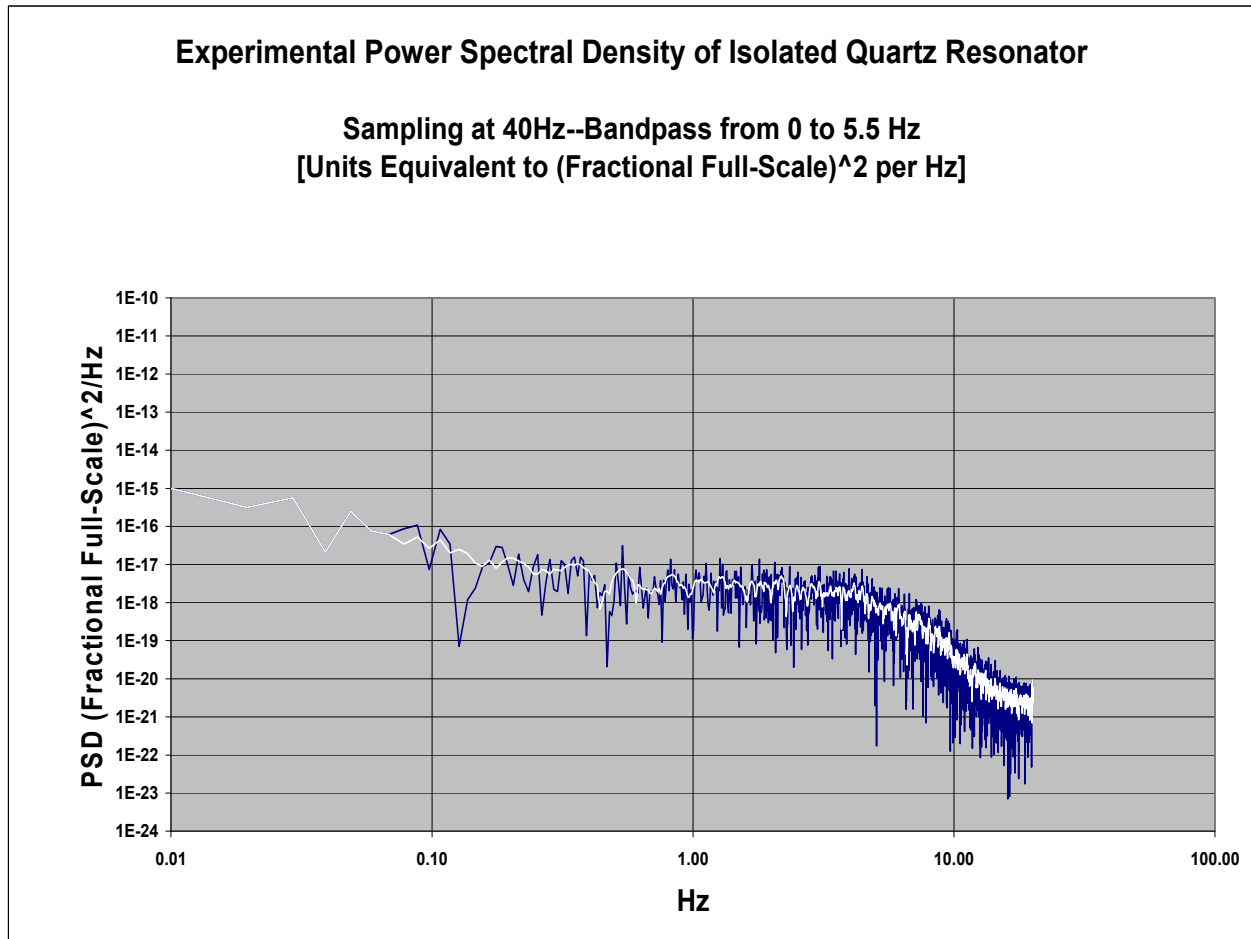


Figure 2

The Nano-Resolution Accelerometers are individually calibrated and tested. Coefficients are derived to temperature compensate and linearize the outputs of each accelerometer. Three accelerometers are oriented in nominally orthogonal X, Y and Z positions in a triaxial package. A 24 position tumble test is performed in Earth's 1G gravity field and an alignment matrix is derived to mathematically align the internal orthogonal axes to Cartesian coordinates (See Appendix). This allows the accurate measurements of tilts on each axis without a leveling system. By taking the square root of the sum of the squares (RSS) of the orthogonal acceleration values, Earth's 1G gravity vector can be computed. In the absence of earthquakes, the gravity vector is invariant over time and any changes in the gravity vector can be associated with long-term drift of the accelerometers. In-situ calibration methods can compensate for long-term sensor drift (See: http://www.paroscientific.com/pdf/G8097_Calibration_Methods_to_Eliminate_Sensor_Drift.pdf) and Reference 4.

Thus high-resolution measurements of earthquakes, tilts, slow-slip and long-term events are possible for phenomena occurring over a time spectrum from fractions of a second to years.

Experimental Results and Analysis:

The triaxial package of Nano-Resolution Accelerometers and a data logger were incorporated into an Acceleration Ocean Bottom Seismometer (AOBS) (Reference 5). The AOBS was deployed near the epicenter of the 2011 Tohoku-Oki earthquake from May 2013 to March 2014. Located 35 meters away were a traditional broadband ocean bottom seismometer, differential pressure gauge and ocean bottom tiltmeter. Because the range of the Triaxial Accelerometer is greater than +/- 2 G's on all axes, earthquakes measured with the AOBS never clipped whereas the comparison broadband seismometer and tiltmeters saturated with moderate seismic inputs.

The Nano-Resolution Quartz Resonator Technology allows measurements to parts-per-billion of full scale. Figure 3 is a Power Spectral Density (PSD) plot of the measured gravity vector showing the microseismic peak and noise floor.

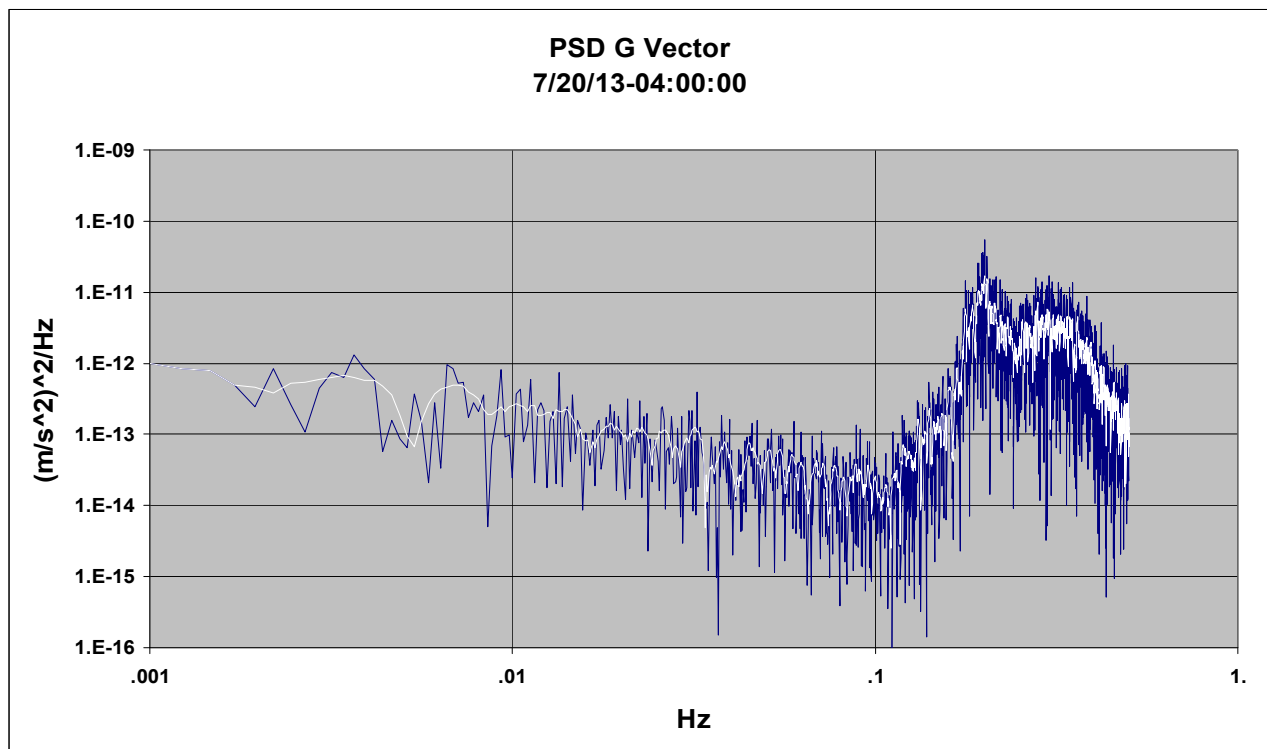


Figure 3

Using the alignment matrix allows accurate measurements of seismic signals and tilts on decoupled orthogonal axes. By taking the square root of the sum of the squares (RSS) of the orthogonal acceleration values, the gravity vector can be computed and compared to the static value of Earth's "invariant" 1G gravity value at the deployment site.

The importance of using the aligned values of measured accelerations is illustrated in Figure 4 where earthquake signals are plotted with and without the alignment matrix. Without the alignment matrix (red), there appears to be a shift in the measured G vector. The aligned measurement (blue) is invariant before and after the earthquake and a "true" measure of acceleration and tilt is obtained on the orthogonal axes.

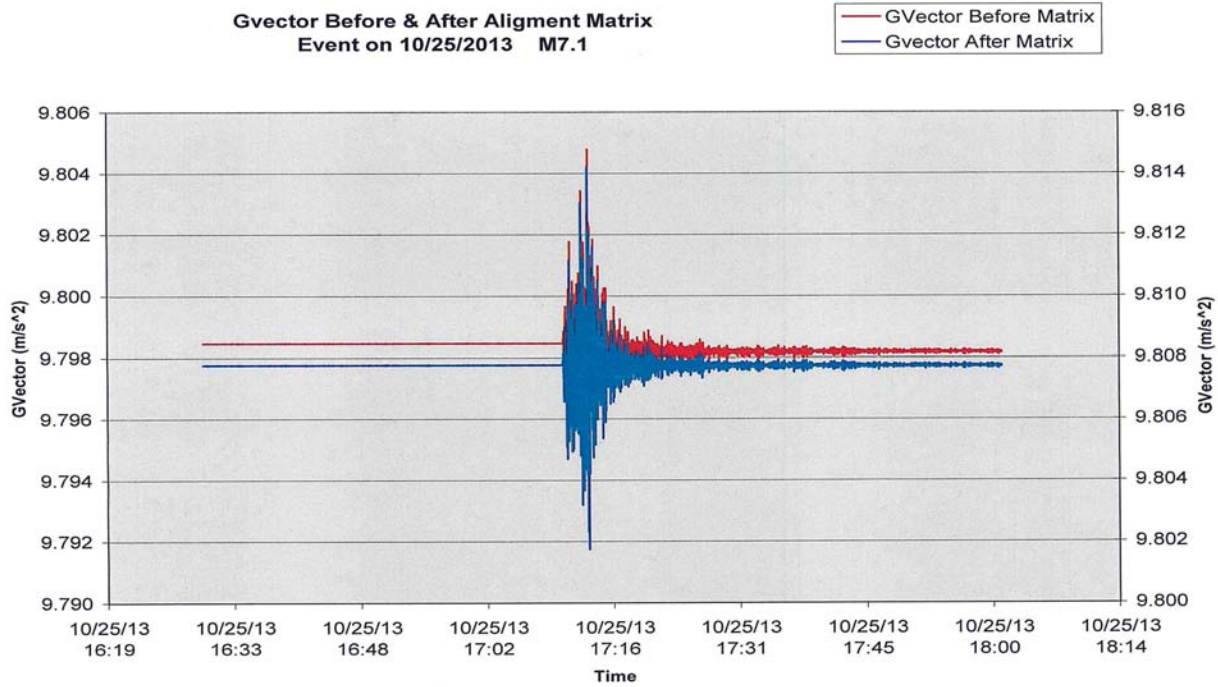


Figure 4

Figure 5 plots the long-term drift of the measured gravity vector. The residuals of a mathematical fit are a few parts-per-million (ppm) of the 20 m/sec² full scale range. An in-situ calibration method has been developed (Reference 4).

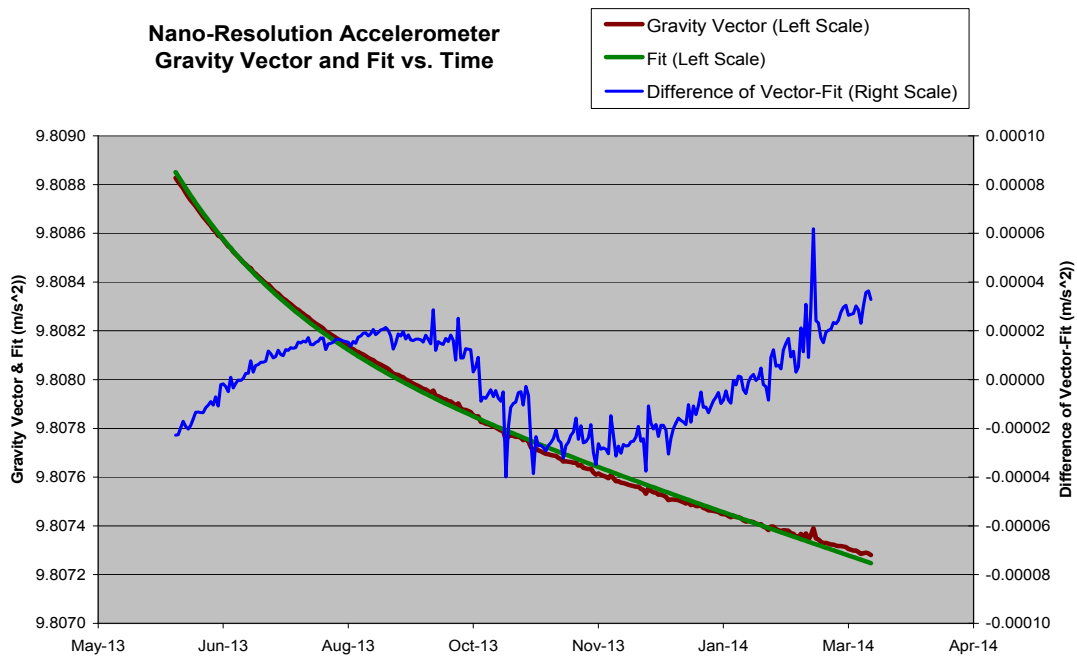


Figure 5

Reference 6 describes a new tool to measure Acceleration, Pressure & Temperature (APT). Seismic and tilt measurements made with the Quartz Triaxial Accelerometer are compared to a broadband seismometer in Figure 6.

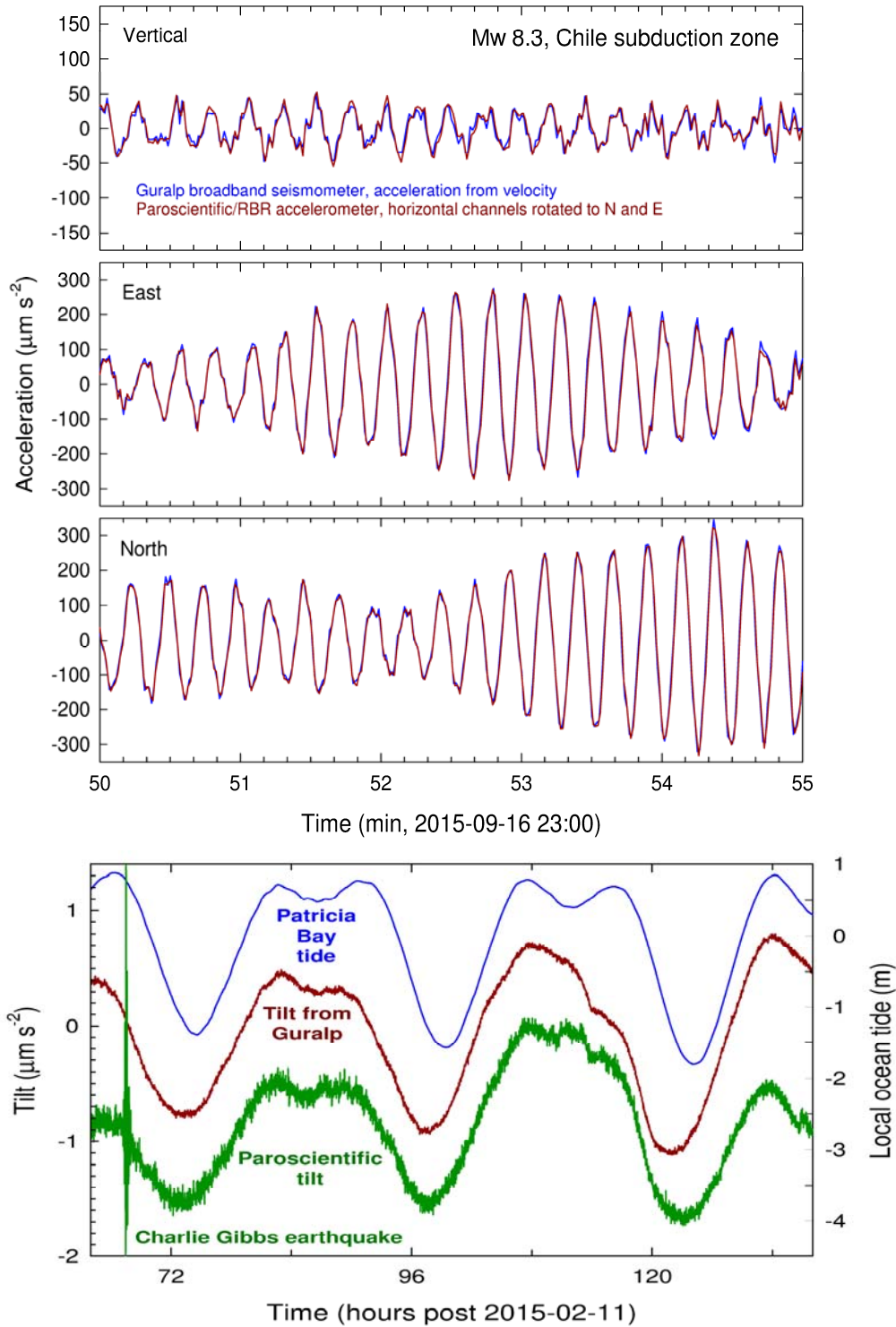


Figure 6

Strap-down Gravimeter Tests

Tests were run on a Quartz Crystal Triaxial Accelerometer to determine its suitability for use as a strap-down gravimeter for AUV gravity surveys. The performance goal was to measure gravity to better than 1 mGal/day with a +/- 3G full-scale triaxial accelerometer. The outputs from the Nano-Resolution processing electronics were aligned values of X, Y, Z, and Total Vector accelerations as well as sensor temperature. The IIR filter was set at IA =13 (0.16 Hz corner frequency). Data was logged at 1 Hz and analyzed at 1 minute intervals with 60 seconds averages. Figure 7 shows the measured gravity vector and sensor temperature versus date/time. A linear correction was made for residual thermal errors caused by up to 2 degrees C variation. A linear correction was made for daily drift.

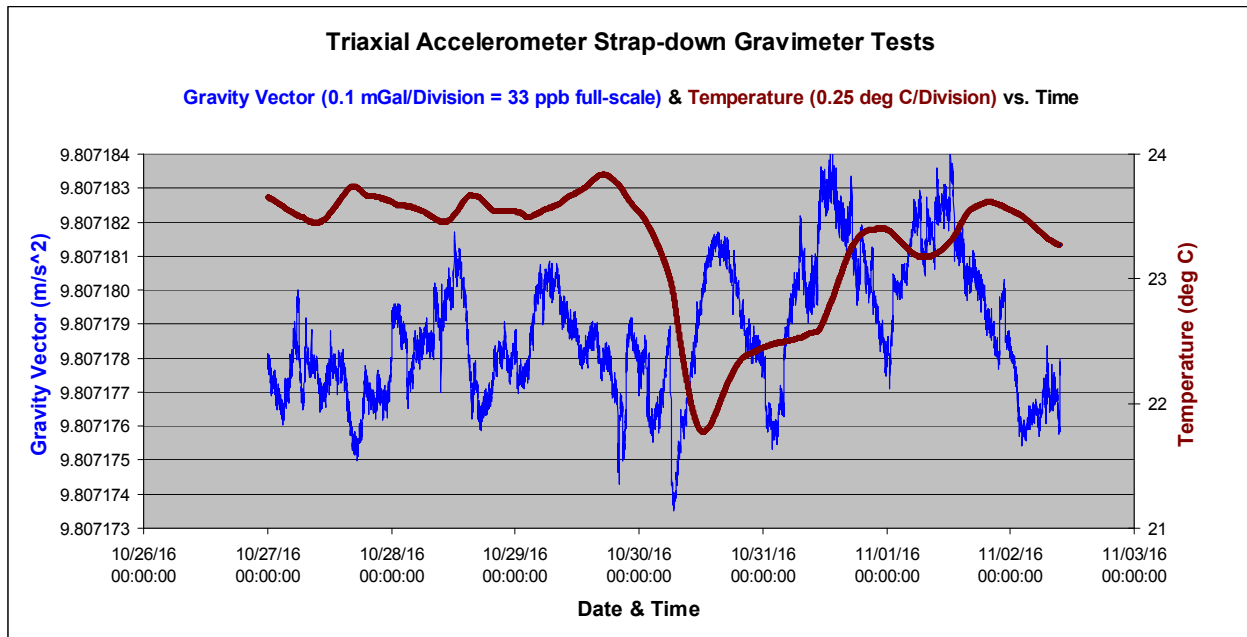


Figure 7

Conclusions:

Triaxial Accelerometers have been developed with a full-scale range of several G's, parts-per-billion sensitivity and good long-term stability. The high range eliminates clipping (saturation) and sensitive measurements of tilt can be made without a leveling system. An internal alignment matrix uses the invariance of the Earth's gravity vector as a reference to measure seismic events and resultant earth movements. The Triaxial Accelerometers play a key role in sensor modules that have been developed for both disaster warning and geodetic measurements. The instrumentation package includes deep-sea absolute pressure gauges, a triaxial accelerometer, and nano-resolution processing electronics. An in-situ calibration system eliminates pressure sensor drift. In addition to making the seismic and tilt measurements, the Triaxial Accelerometer outputs are used to eliminate the orientation sensitivity of the pressure gauges. The GODS modules work on cabled systems (both internally and externally mounted), in remote ocean bottom recorders, and in underwater vehicles (See: [http://www.paroscientific.com/pdf/P20_Seismic_Oceanic_Sensors_\(SOS\).pdf](http://www.paroscientific.com/pdf/P20_Seismic_Oceanic_Sensors_(SOS).pdf)).

Acknowledgements:

We would like to acknowledge the excellent work of Y. Fukao, H. Sugioka, A. Ito, and H. Shiobara for developing new Acceleration Ocean Bottom Seismometers (AOBS) and E.E. Davis, J. Paros, G. Johnson, M. Heesemann, and R. Meldrum for developing new Acceleration, Pressure & Temperature (APT) tools that use the Quartz Triaxial Accelerometers described in this paper.

References:

- [1] J. M. Paros, T.P. Schaad, "Digital Angular Rate and Acceleration Sensor", U.S. Patent 6,595,054 B2, July 22, 2003
- [2] T. P. Schaad, J. M. Paros, "Triaxial Acceleration Sensor", U.S. Patent 6,826,960 B2, Dec. 7, 2004
- [3] J.M. Paros, T. P. Schaad, "High Resolution Digital Seismic and Gravity Sensor and Method", U.S. Patent 8,616,054 B2, Dec. 31, 2013
- [4] J.M. Paros, "Triaxial Acceleration Assembly and In-situ Calibration Method for Improved Geodetic and Seismic Measurements", U.S. Patent 9,645,267 B2, May 9, 2017
- [5] Fukao, Y., H. Sugioka, A. Ito, H. Shiobara, J. M. Paros, and R. Furue, "Sensing of upslope passages of frontal bores across the trench slope break of the Japan Trench", (2016), J. Geophys. Res. Oceans, 121, doi:[10.1002/2015JC011432](https://doi.org/10.1002/2015JC011432).
- [6] Davis, E.E., Paros, J., Johnson, G., Heesemann, M., Meldrum, R., 2015, "APT: An Autonomous Tool for Measuring Acceleration, Pressure, and Temperature with Large Dynamic Range and Bandwidth", AGU Abstract, <https://agu.confex.com/agu/fm15/webprogram/Paper76804.html>.

Appendix

Aligning the Triaxial Accelerometer to Cartesian Coordinates

Abstract:

The Quartz Triaxial Accelerometer consists of three single-axis accelerometers mounted in a triaxial arrangement such that each component is near an orthogonal x, y, z axis. After factory calibration, an alignment matrix is calculated that provides the outputs along true orthogonal Cartesian axes with outputs a_x , a_y , a_z (using the Paroscientific Intelligent Interface Board). As a result, the magnitude of the total g vector is constant in any placement of the triax. If the triax were positioned such that $a_x=0$ and $a_y=0$, a_z would be exactly the total g value (points directly along the gravitational pull). In most deployments, and absent an elaborate positioning apparatus, the outputs are not exactly along cardinal directions (up/down, east/west, north/south). The outputs can be rotated with matrix algebra to derive outputs into any other orthogonal frame. Here we use the aviation language of pitch, roll, and yaw to describe the method and how to calculate the three angles of rotation. A proper external alignment rotation will eliminate the cross-axis sensitivity both statically (tilts under gravity) and dynamically (i.e. vibrations along cardinal directions).

Background:

Traditional analog seismometers came in two varieties: horizontal and vertical. The latter was more difficult to construct and often less sensitive, or with a different frequency response. To make them equal, Streckeisen introduced the STS-2 broadband seismometer with three identical components that were positioned in a triad with inclination of 54.7 degrees each (Reference Havslov, p. 69). The three outputs are then rotated electronically and recombined with a 3x3 matrix to x, y, z components.

Similarly, the Quartz Triaxial Accelerometer consists of three identical single-axis accelerometers with the same scale factor and frequency response, arranged in a nearly, but not exactly, orthogonal triad. Since the full scale exceeds earth's gravity, it can be placed in any orientation without a leveling system. A proper 3-dimensional matrix rotation recombines the outputs with a digital data processor into x, y, z components.

Internal and External Alignment Matrices:

There are two matrix manipulations necessary to arrive at the final result. The first matrix is calculated by the manufacturer to provide outputs a_x , a_y , a_z that are orthogonal. This is referred to as an "internal" alignment matrix. The internal alignment does not guarantee that if the triax is placed on a level surface that the horizontal axes are exactly zero (the typical internal alignment is within about 1 degree or less).

The triax could be physically positioned to be exactly horizontal. This could be accomplished with two leveling screws that are turned until both a_x and a_y are exactly zero. If the nominal z direction is up, the a_z component will then show the full g magnitude as it is exactly aligned with the vertical direction (as defined by the g vector). Leveling in the horizontal direction is accomplished by adjusting two small angles (called pitch and roll below) with the net result that the polar angle of the a_z direction is adjusted to zero.

That leaves the azimuthal adjustment. For illustration, it is assumed that the a_x component is pointing towards east and the a_y component towards north (but that's only a convention). The a_x , a_y outputs are not exactly aligned with cardinal directions (typically off by 1 deg or less) and the g vector is of no help. Now we need a known vibration in the horizontal plane such that we can physically turn the sensor in the azimuth until it is aligned. This could be accomplished with a precisely aligned x/y shake table. An easier method involves using a 90 degree bracket and rotating the sensor 90 degrees in the x-y plane to place a_y near vertical. The sensor could then be physically rotated in the x-y plane until $a_x=0$ and repositioned horizontally.

Roll and Pitch Correction in Matrix Form:

A three-dimensional rotation can be specified in a number of ways. Generally it involves three Euler angles that are rotated one at a time while holding the other two fixed. Because of different conventions, the sign (or direction) of angles must be carefully checked. Here we are using common terms from avionics. The pitch, roll, and yaw angles are illustrated in Figure 1.

Here we define the z direction as vertical (up) along the gravitational direction. Note that even though gravity pulls down (exerts a force on the proof mass of the accelerometer), the sensor frame accelerates upwards and the a_z output is positive (near 9.8 m/s/s). If there is added acceleration in the z direction, then a_z increases. This is best visualized in an elevator – our weight increases as we accelerate upwards.

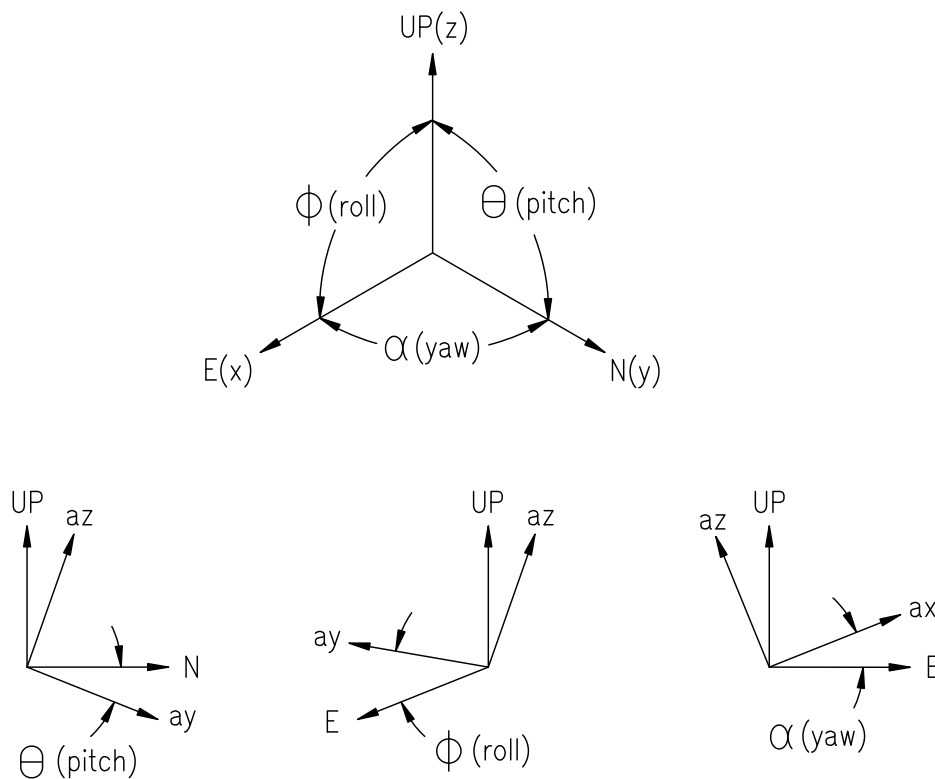


Figure 1

The nominal horizontal directions in a right-handed frame are x along the east (E) direction and y along the north (N) direction). Here we define the pitch along the y direction. The pitch angle θ is defined in the y-z plane. If ay is positive the pitch angle is also positive (upwards). In the y-z plane, the rotation matrix is calculated from the pitch angle θ :

The new vector components are

$$ay' = ay \cos \theta - az \sin \theta$$

$$az' = ay \sin \theta + az \cos \theta$$

The goal is to align the pitch to zero. Setting $ay'=0$ gives: $ay \cos \theta = az \sin \theta$ and $\tan \theta = ay/az$

Hence the pitch angle θ is the arctangent of the ratio ay/az . This ratio is simply the static output of the accelerometer. As an example: If the measured outputs (in earth's gravity) are $az= 9.7965$ m/s/s, $ay=-0.1234$ m/s/s, then $\theta=-0.7217$ deg. (pitch is negative - down in the north direction).

Next we define the roll in analogous fashion in the x-z plane. The roll angle α is positive if the ax output is positive (upwards in the east direction). The rotation matrix for this second operation is:

$$ax' = ax \cos \phi - az \sin \phi$$

$$az' = ax \sin \phi + az \cos \phi$$

Again, the goal is $ax'= 0$ (no roll), hence $\tan \phi = ax/az$ and the roll angle ϕ is the arctangent of the measured ratio ax/az .

In three dimensions, the pitch rotation matrix is

$$\begin{array}{ccc} 1 & 0 & 0 \\ 0 & C1 & -S1 \\ 0 & S1 & C1 \end{array}$$

Where $C1 = \cos \theta$, $S1 = \sin \theta$

The roll rotation matrix is

$$\begin{array}{ccc} C2 & 0 & -S2 \\ 0 & 1 & 0 \\ S2 & 0 & C2 \end{array}$$

Where $C2 = \cos \phi$, $S2 = \sin \phi$

The combined pitch and roll rotation is the product of the two matrices:

$$\begin{array}{ccc} C2 & -S1S2 & -C1S2 \\ 0 & C1 & -S1 \\ S2 & S1C2 & C1C2 \end{array}$$

The new acceleration vector output aligned with the true horizontal plane is the measured output vector components multiplied by the combined matrix. The horizontal alignment will eliminate any cross-axis errors in the ax' and ay' outputs if the vibration is truly vertical.

Yaw Correction in Matrix Form:

We define the yaw angle α as a misalignment of the ax (east) output in the direction of ay (north). This is not easily determined except with a known directional input in the horizontal plane. This could be determined on an x/y shake table or with an earthquake signal from a known location. As shown above, it could also be measured by rotating the ay axis into the vertical direction and measuring the ratio ax/ay in a static field (prior to deployment).

In a deployed horizontal direction, the only signal stems from an external vibration with (measured) amplitude Δax and Δay . As before, the two-dimensional rotation in the horizontal plane is

$$\Delta ax' = \Delta ax \cos \alpha - \Delta ay \sin \alpha \quad \text{and} \quad \Delta ay' = \Delta ax \sin \alpha + \Delta ay \cos \alpha$$

Again, the goal is $\Delta ax' = 0$ (no cross-axis sensitivity if the vibration is along ay) and we find the yaw misalignment as:

$$\tan \alpha = \Delta ax / \Delta ay$$

The yaw correction in a three-dimensional matrix (where C3 = cos α and S3 = sin α) is:

$$\begin{matrix} C3 & -S3 & 0 \\ S3 & C3 & 0 \\ 0 & 0 & 1 \end{matrix}$$

The yaw correction can be combined with the pitch-and-roll correction into a single 3X3 matrix:

$\begin{matrix} C2C3 & (-C1S3 - S1S2C3) & (-C1S2C3 + S1S3) \\ C2S3 & (C1C3 - S1S2S3) & (-S1C3 - C1S2C3) \\ S2 & S1C2 & C1C2 \end{matrix}$	For Small Angles (radians) »»»»»»»»	$\begin{matrix} 1 & -\alpha & -\phi \\ \alpha & 1 & -\theta \\ \phi & \theta & 1 \end{matrix}$
---	--	--

The somewhat uneven look of the matrix elements is a consequence of the fact that three-dimensional rotations are performed in three steps that are not commutative. But, if properly calculated, the matrix constitutes a proper rotation with a determinant of 1. The magnitude of the g vector is unchanged under proper rotations and the matrix is valid at all angles even if they are far from cardinal directions. The following example shows that the standard deviation for +/- 1 G flips on all three axes and pitch and roll tilts greater than +/- 10 degrees was less than 1 part-per-million of the full-scale range of +/- 3 Gs.

Triaxial Accelerometer Flip and Tilt Tests

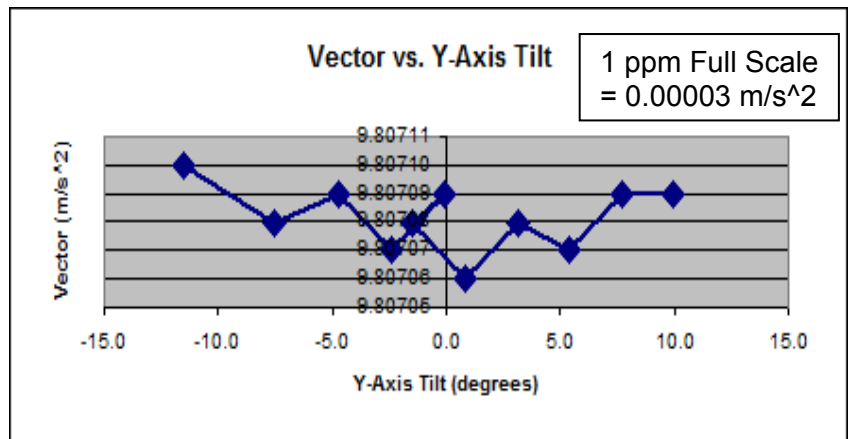
Adjustments made to the pitch and roll cross terms in the alignment matrix for X-Axis and Y-Axis tilts.

Flip Tests (+/- 1 G) for Each Axis

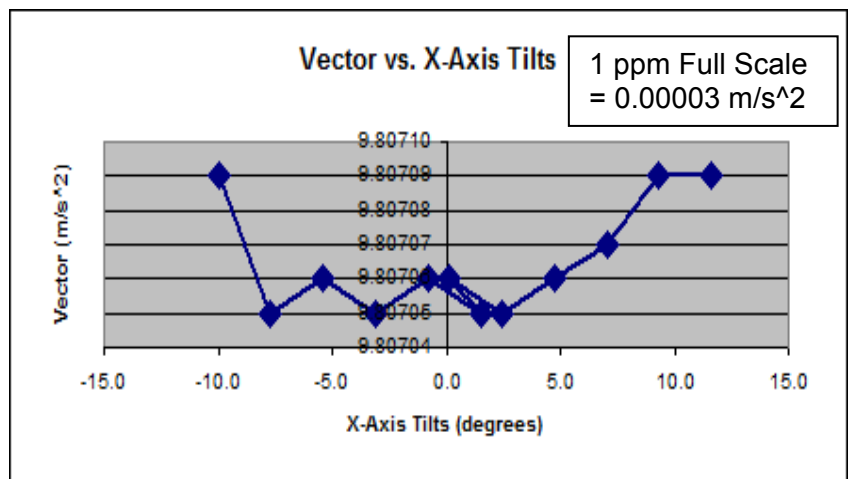
Orientation	Vector (m/s ²)	
X=+1G	9.80704	Y=+1G 9.80709 Z=+1G 9.80711
X=-1G	9.80709	Y=-1G 9.80707 Z=-1G 9.80703
Average	9.80707	
Std. Deviation	0.00002	

Z-Axis aligned with Gravity Plumb Line and Pitch and Roll Tilts about X & Y Axis

Y-Axis Tilt (deg)	Vector (m/s ²)
-11.6	9.80710
-7.5	9.80708
-4.7	9.80709
-2.4	9.80707
-0.1	9.80709
-1.5	9.80708
0.8	9.80706
3.1	9.80708
5.4	9.80707
7.7	9.80709
10.0	9.80709
Average	9.80708
Std. Deviation	0.00001



X-Axis Tilt (deg)	Vector (m/s ²)
11.6	9.80709
9.3	9.80709
7.0	9.80707
4.7	9.80706
2.4	9.80705
0.1	9.80706
1.5	9.80705
-0.8	9.80706
-3.1	9.80705
-5.4	9.80706
-7.7	9.80705
-10.0	9.80709
Average	9.80707
Std. Deviation	0.00002



Appendix References:

J. Havskov and G. Alguacil: Instrumentation in Earthquake Seismology (2004), Springer

J.M. Paros, "Triaxial Acceleration Assembly and In-situ Calibration Method for Improved Geodetic and Seismic Measurements", U.S. Patent 9,645,267 B2 May 9, 2017